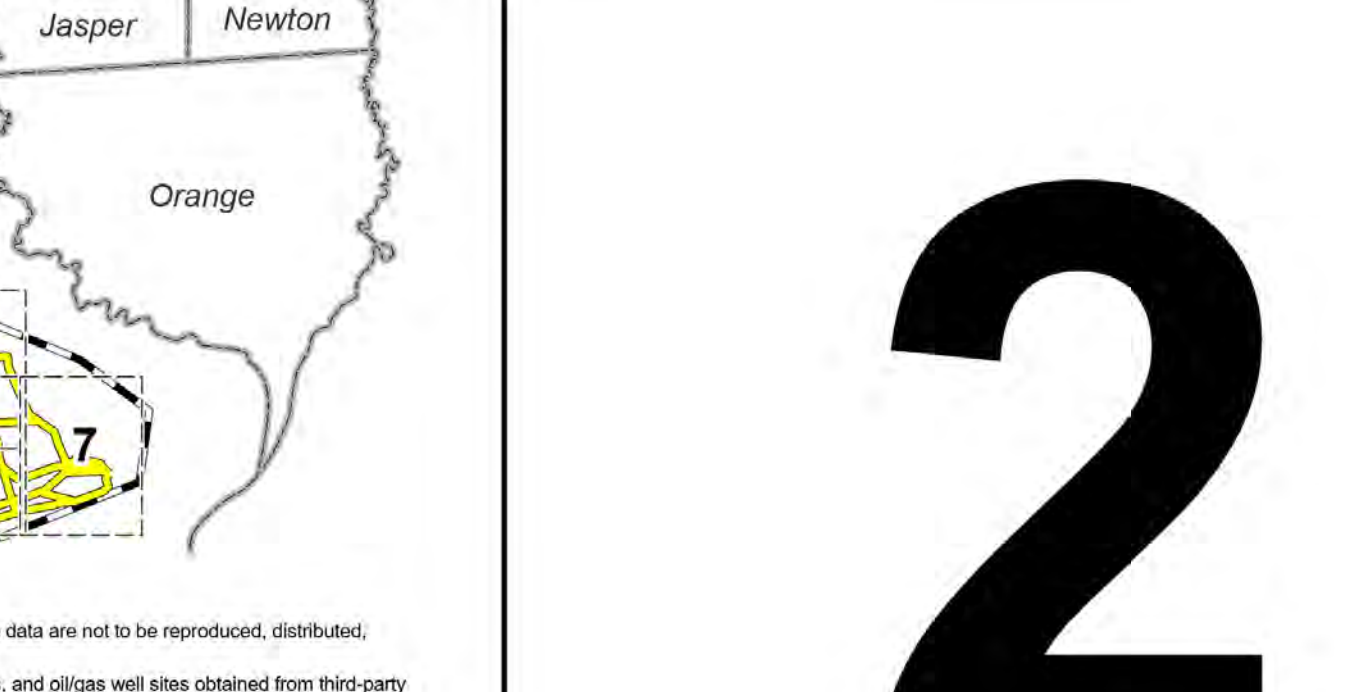


- Project Features**
 - Study Area Boundary
 - Preliminary Alternative Segment, Node, and Label
 - Existing Substation
 - Proposed Legend 500 KV Substation
 - Proposed 225R Right-of-Way
 - Display Board Matchline
- Existing Utility Features**
 - 69 KV Transmission Line
 - 138 KV Transmission Line
 - 230 KV Transmission Line
 - 345 KV Transmission Line
 - 500 KV Transmission Line
 - Oil / Gas Pipeline
- Land Use Features**
 - AM Communication Tower
 - Communication Tower Other
 - School
 - Church
 - Oil / Gas Well
 - Water Well
 - Habitable Structure Within 500 feet of Proposed Centerline
- Land Use Features**
 - Park / Recreation Area
 - TPWD Public Hunting and Wildlife Management Areas
 - Big Thicket National Preserve
 - Cemetery and Boundary
 - Official Texas Historical Marker
- Transportation Features**
 - Public Airport and Runway
 - Private Airport and Runway
 - Helipoint
 - Interstate Highway
 - US Highway
 - State Highway
 - Farm to Market Road
 - County / Local Road
 - Railroad
- Hydrologic Features**
 - River / Stream
 - NWI Mapped Wetlands
 - 100-Year Floodplain
 - Waterbody
- Administrative Features**
 - Municipal Boundary
 - County Boundary
 - Parcel Boundary

- Project Features**
 - Study Area Boundary
 - Preliminary Alternative Segment, Node, and Label
 - Existing Substation
 - Proposed Legend 500 KV Substation
 - Proposed 225R Right-of-Way
 - Display Board Matchline
- Existing Utility Features**
 - 69 KV Transmission Line
 - 138 KV Transmission Line
 - 230 KV Transmission Line
 - 345 KV Transmission Line
 - 500 KV Transmission Line
 - Oil / Gas Pipeline
- Land Use Features**
 - AM Communication Tower
 - Communication Tower Other
 - School
 - Church
 - Oil / Gas Well
 - Water Well
 - Habitable Structure Within 500 feet of Proposed Centerline
- Land Use Features**
 - Park / Recreation Area
 - TPWD Public Hunting and Wildlife Management Areas
 - Big Thicket National Preserve
 - Cemetery and Boundary
 - Official Texas Historical Marker
- Transportation Features**
 - Public Airport and Runway
 - Private Airport and Runway
 - Helipoint
 - Interstate Highway
 - US Highway
 - State Highway
 - Farm to Market Road
 - County / Local Road
 - Railroad
- Hydrologic Features**
 - River / Stream
 - NWI Mapped Wetlands
 - 100-Year Floodplain
 - Waterbody
- Administrative Features**
 - Municipal Boundary
 - County Boundary
 - Parcel Boundary

- Project Features**
 - Study Area Boundary
 - Preliminary Alternative Segment, Node, and Label
 - Existing Substation
 - Proposed Legend 500 KV Substation
 - Proposed 225R Right-of-Way
 - Display Board Matchline
- Existing Utility Features**
 - 69 KV Transmission Line
 - 138 KV Transmission Line
 - 230 KV Transmission Line
 - 345 KV Transmission Line
 - 500 KV Transmission Line
 - Oil / Gas Pipeline
- Land Use Features**
 - AM Communication Tower
 - Communication Tower Other
 - School
 - Church
 - Oil / Gas Well
 - Water Well
 - Habitable Structure Within 500 feet of Proposed Centerline
- Land Use Features**
 - Park / Recreation Area
 - TPWD Public Hunting and Wildlife Management Areas
 - Big Thicket National Preserve
 - Cemetery and Boundary
 - Official Texas Historical Marker
- Transportation Features**
 - Public Airport and Runway
 - Private Airport and Runway
 - Helipoint
 - Interstate Highway
 - US Highway
 - State Highway
 - Farm to Market Road
 - County / Local Road
 - Railroad
- Hydrologic Features**
 - River / Stream
 - NWI Mapped Wetlands
 - 100-Year Floodplain
 - Waterbody
- Administrative Features**
 - Municipal Boundary
 - County Boundary
 - Parcel Boundary



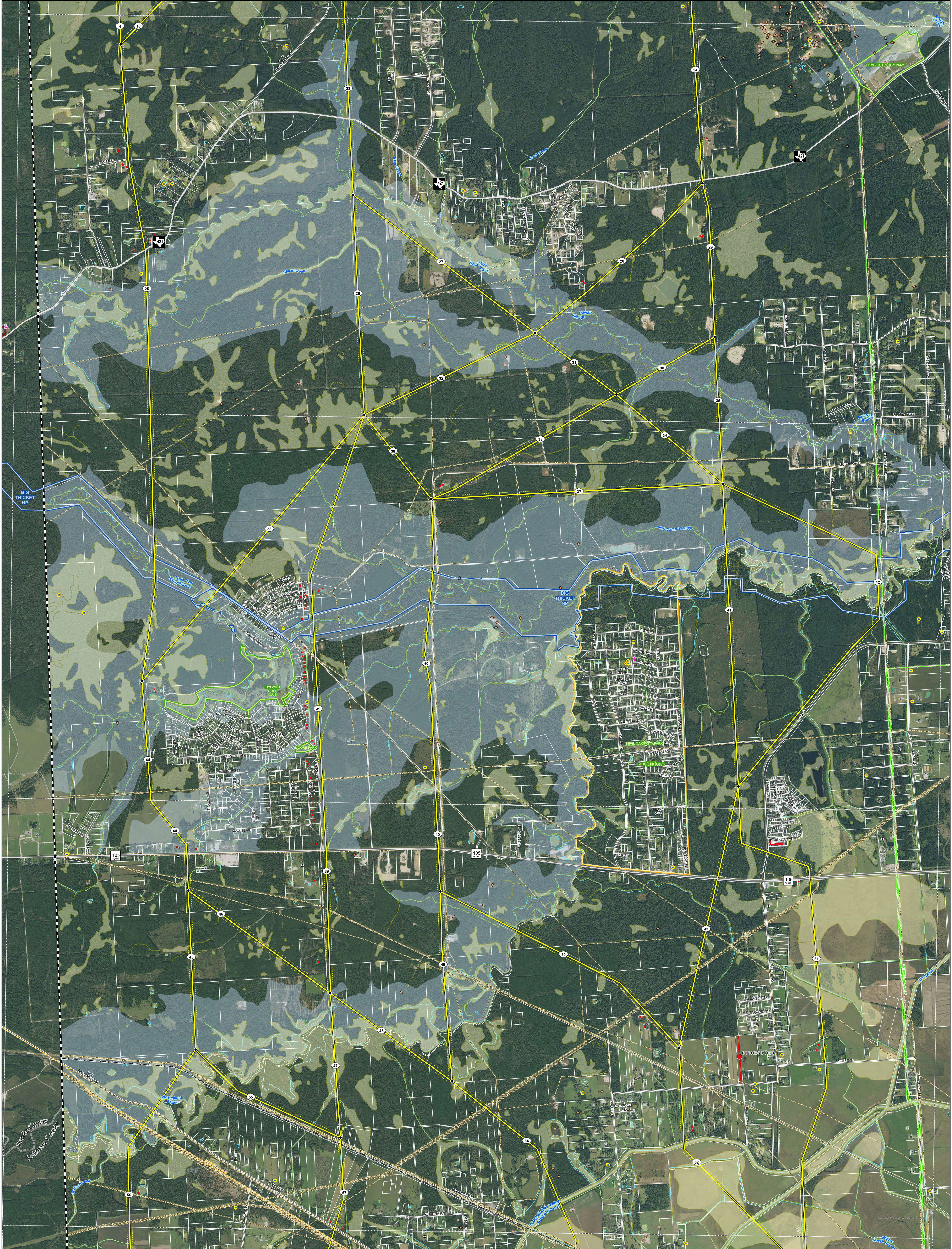
CYPRESS TO LEGEND
500 KV TRANSMISSION LINE
PROJECT

**PRELIMINARY ALTERNATIVE
SEGMENTS WITH
ENVIRONMENTAL CONSTRAINTS**

Date: 4/23/2024

2

Preliminary and Subject to Change



If approved, any new route (consisting of multiple route segments) from the existing Cypress Substation to the proposed Legend 500 KV Substation will be selected by the Public Utility Commission of Texas (PUCT). All routes and route segments in this notice are available for selection and approval by the PUCT. Issue Date: 2022-04-07